



S K A I

S O U T H H A R B O U R | M I N A



A Life of
E X T R A O R D I N A R Y





An Ode
T O T H E S O U L

A TIMELESS DANCE BETWEEN LIGHT AND LIQUID,
WHERE FORM FADES INTO FEELING.



Inspired by
T H E O C E A N

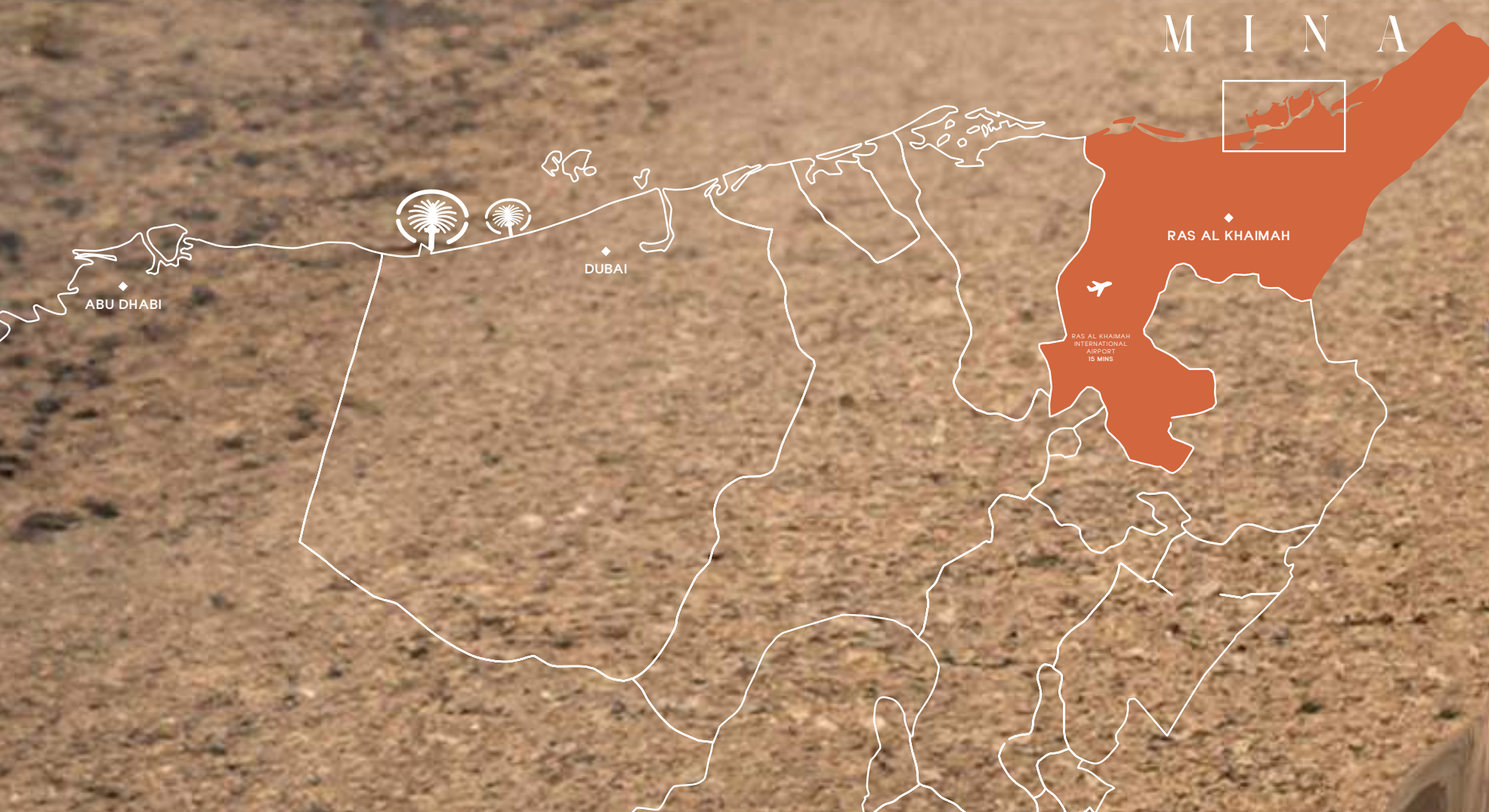
SKAI - A MASTERPIECE OF DESIGN INSPIRED BY THE RHYTHM OF WATER, WHERE NATURE'S ELEGANCE AND LUXURY CREATE AN EXCEPTIONAL WAY OF LIVING.





A Perfectly Positioned C O A S T A L R E T R E A T

A TRANQUIL ISLAND SANCTUARY IN RAS AL KHAIMAH, MINA IS FRAMED BY 18 KILOMETRES OF PRISTINE COASTLINE, OFFERING UNMATCHED NATURAL BEAUTY AND SEAMLESS ACCESS TO ABU DHABI, DUBAI, AND BEYOND.





Welcome to R A H A I S L A N D

LOCATED ON RAHA ISLAND AND CLOSE TO THE VIBRANT
MINA HARBOUR, SKAI SITS AT THE HEART OF AN EXTRAORDINARY
NEW DESTINATION, FEATURING LUXURY HOTEL RESORTS, YACHT
CLUB, MARINA, FINE DINING AND RETAIL.



SKAI

DESIGNED TO COMPLEMENT ITS COASTAL
SURROUNDINGS, SKAI'S ARCHITECTURE
SEAMLESSLY INTEGRATES BOLD DESIGN WITH
THE BEAUTY OF ITS ENVIRONMENT.



Grace in Motion

HARMONY IN DESIGN

LOCATED ALONG THE VIBRANT CANALS OF RAHA ISLAND,
SKAI BOASTS STRIKING WATERFRONT VIEWS THAT ENHANCE EVERYDAY
LIFE. ITS PRIME POSITION PLACES YOU IN THE MIDST OF A BUSTLING
DESTINATION, WHERE LUXURY AND CONVENIENCE CONVERGE.



Harbour Living R E D E F I N E D

SKAI REDEFINES HARBOUR LIVING WITH BOLD DESIGN AND A PRIME WATERFRONT LOCATION. ENJOY SEAMLESS ACCESS TO EXCITING DESTINATIONS, EXCEPTIONAL AMENITIES, AND A CHARMING, CONNECTED NEIGHBOURHOOD. CRAFTED FOR THOSE WHO SEEK EFFORTLESS LUXURY, SKAI OFFERS MODERN CONVENIENCE AND A STRONG SENSE OF COMMUNITY.





Spaces that
I N S P I R E

EXPLORE THOUGHTFULLY CRAFTED LAYOUTS THAT
BALANCE FUNCTIONALITY WITH ELEGANCE, CREATING
SPACES THAT MOVE WITH YOUR LIFE.



Studio

MODERN INTERIORS AND FUNCTIONAL LAYOUTS WITH PRIVATE BALCONIES, PERFECT FOR DIGITAL NOMADS OR THOSE SEEKING A MINIMALIST YET ELEGANT LIFESTYLE.

One-Bedroom Suite

AN OPEN-PLAN LIVING SPACE WITH FLOOR-TO-CEILING WINDOWS AND GENEROUS BALCONIES, OFFERING STYLE AND COMFORT FOR PROFESSIONALS OR COUPLES.

One-Bedroom Premium

EXPANSIVE INTERIORS, LUXURIOUS FINISHES, AND PRIVATE OUTDOOR SPACES, OFFERING A REFINED BLEND OF LUXURY AND COMFORT.

Two-Bedroom Apartment

SPACIOUS LIVING AREAS, PANORAMIC VIEWS, AND HIGH-END FINISHES, IDEAL FOR FAMILIES OR THOSE WHO LOVE TO ENTERTAIN.

Penthouse Three-Bedroom

GRAND INTERIORS, OVERSIZED TERRACES, AND BREATHTAKING VIEWS, PROVIDING A PRESTIGIOUS LIVING EXPERIENCE FOR THOSE SEEKING ULTIMATE LUXURY.





Elevated Living

U N M A T C H E D V I E W S



Studio

(from 386.4 sqft to 520.3 sqft)



One-Bedroom Suite

(from 634.0 sqft to 908.9 sqft)



One-Bedroom Premium

(from 771.2 sqft to 1,012.7 sqft)



Two-Bedroom Apartment

(from 1,203.9 sqft to 2,065.6 sqft)



Penthouse Three-Bedroom

(from 2,278.9 sqft to 3,104.3 sqft)











A Sanctuary for
B O D Y A N D M I N D

DISCOVER SKAI'S HARMONIOUS BLEND OF
MOVEMENT AND RELAXATION, WHERE WELLNESS
BECOMES A SEAMLESS PART OF YOUR ROUTINE.

SKAI CLUB
ZEN GARDEN | OUTDOOR GYM | PADEL COURT | SKAI POOL
YOGA PAVILION | BBQ AREA | JUNIOR PLAYLAND



SKAI CLUB

SKAI CLUB IS AN EXTENSION OF YOUR HOME, OFFERING
AN IDEAL SPACE FOR ENTERTAINING AND RELAXATION.
WITH EVERY AMENITY PERFECTLY INTEGRATED, IT
ENHANCES YOUR LIFESTYLE, COMPLEMENTING YOUR
RESIDENCE WITH EFFORTLESS LUXURY.





Zen GARDEN

A PEACEFUL RETREAT IN THE HEART OF SKAI.
THE ZEN GARDEN IS DESIGNED TO INSPIRE PEACE AND
MINDFULNESS, WITH LUSH GREENERY, CALMING
PATHWAYS, AND A SERENE ATMOSPHERE TO UNWIND
AND RECONNECT.

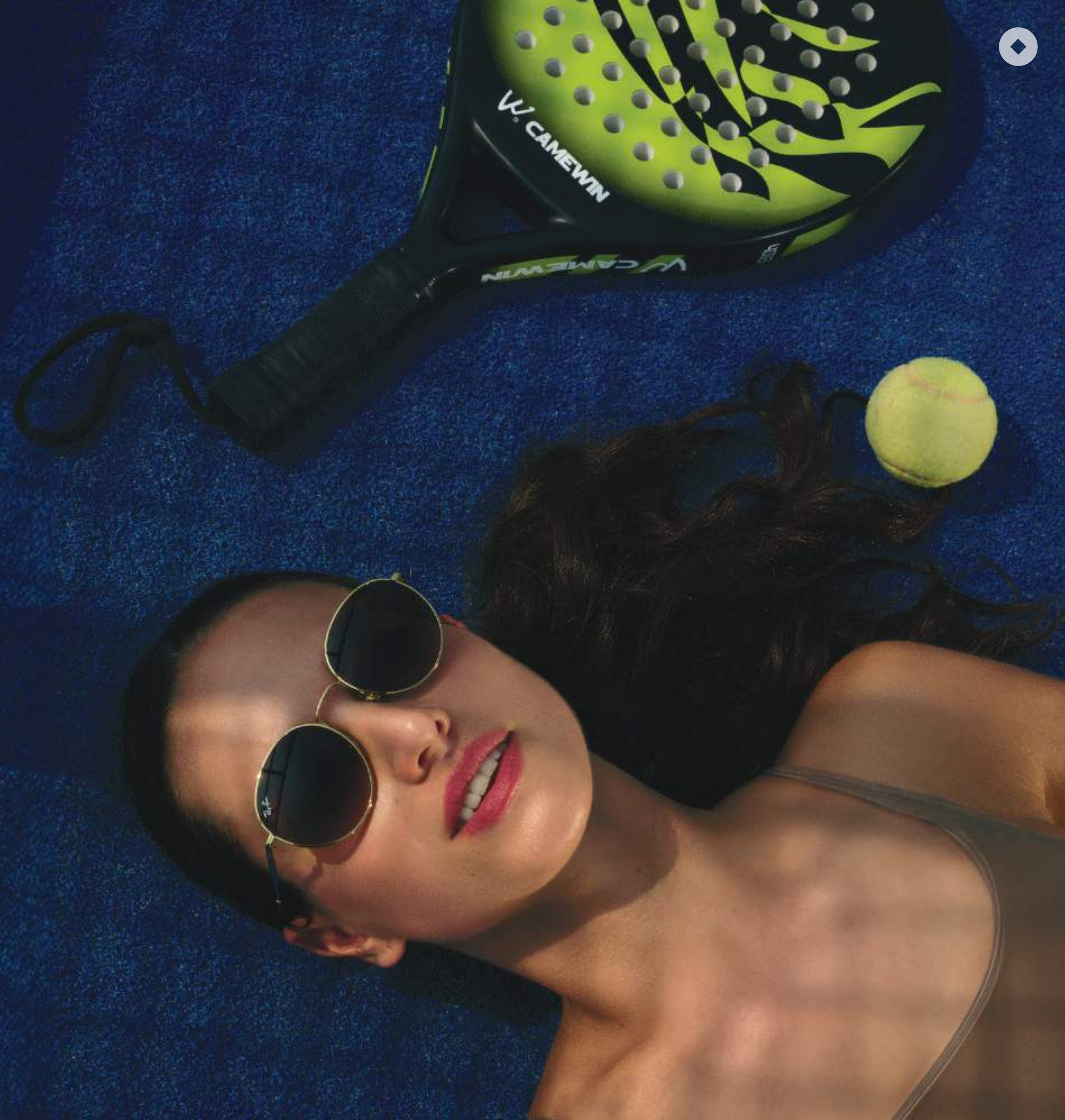
A wide-angle photograph of a modern, minimalist outdoor gym. The space is characterized by large glass windows that offer a view of a lush, green outdoor area with trees and a paved walkway. The interior features a dark grey floor, a wooden pillar, and a wooden wall with a grid of black metal rods and a large, round, light-colored object. In the foreground, there is a large, rectangular concrete planter box filled with various green plants. To the left, a black metal rack holds several black dumbbells. In the background, there are black metal exercise machines and a wooden bench. The overall atmosphere is bright and airy, with natural light streaming in from the large windows.

Outdoor GYM

FITNESS MEETS FRESH AIR. THE OUTDOOR GYM OFFERS CUTTING-EDGE EQUIPMENT IN AN OPEN-AIR SETTING, ALLOWING RESIDENTS TO TRAIN WITH BREATHTAKING VIEWS AND A REVITALISING NATURAL ENVIRONMENT.

Padel C O U R T

EXPERIENCE ONE OF THE WORLD'S FASTEST-GROWING
SPORTS, RIGHT AT YOUR DOORSTEP - A PERFECT
BLEND OF COMPETITION AND COMMUNITY.



A wide-angle photograph of a modern luxury pool at dusk. On the left, a multi-story building with glass balconies and warm interior lighting stands. In the center, a large, calm pool reflects the sky and the building. To the right of the pool, there's a deck with lounge chairs and a small table with a glowing lamp. The background features a tropical landscape with palm trees and a view of the ocean under a sunset sky with soft clouds. The overall mood is serene and sophisticated.

SKAI POOL

MAKE A SPLASH OR SOAK UP THE VIBE. SKAI POOL
IS THE ULTIMATE SPOT TO UNWIND, SOCIALISE, AND TAKE
IN BREATHTAKING VIEWS—ALL WITH A TOUCH OF
EFFORTLESS LUXURY.



Where Iconic Resorts
MEET THE SEA

STEP INTO A WORLD WHERE LEGENDARY HOSPITALITY MEETS
BREATHTAKING COASTAL BEAUTY. FROM THE SERENE ELEGANCE OF
FOUR SEASONS TO THE VIBRANT ENERGY OF NIKKI BEACH, THESE
WORLD-CLASS RESORTS REDEFINE LUXURY.



Nikki Beach

R E S O R T A N D B E A C H C L U B

RENOWNED FOR MUSIC, DINING, ENTERTAINMENT, AND FASHION, NIKKI BEACH ENCOMPASSES CHIC BEACHFRONT ACCOMMODATION AND A SIGNATURE BEACH CLUB WHERE YOU CAN DANCE TO WORLD-RENNED DJS AND SAVOUR GOURMET CUISINE BY THE SEA.





Anantara

R E S O R T A N D S P A

WITH 174 GUEST ROOMS, INCLUDING MALDIVIAN-STYLE WATER VILLAS, ANANTARA OFFERS BREATHTAKING VIEWS OF THE MANGROVES AND OCEAN, EMBRACING THE TRANQUIL BEAUTY OF NATURE.



InterContinental

R E S O R T A N D S P A

DISCOVER ISLAND CHARM AND STAY AT THE MULTI-AWARD-WINNING RESORT, OFFERING GUESTS ACCESS TO A PRISTINE BEACHFRONT.



Four Seasons

R E S O R T A N D R E S I D E N C E S

AN EXCLUSIVE BEACHFRONT RETREAT, WHERE WORLD-CLASS HOSPITALITY MEETS REFINED LUXURY. FEATURING GOURMET DINING, A TRANQUIL SPA, PRISTINE WATERS AND A PRIVATE MARINA, ALL SET AGAINST A BACKDROP OF UNPARALLELED ELEGANCE.



New to
M I N A

EXPLORE MINA'S BUSTLING BOULEVARD, SANDY BAYS
AND MARINA, DESIGNED FOR LUXURY LIVING, LEISURE,
AND VIBRANT COMMUNITY LIFE.





M I N A H A R B O U R

A HUB OF CULTURE AND ENTERTAINMENT, MINA HARBOUR
FEATURES EATERIES, BOUTIQUES, AND LEISURE OPTIONS BY
SHIMMERING WATERS.



Y A C H T C L U B A N D M A R I N A

SET TO BECOME A PREMIER YACHTING DESTINATION, DRAWING
SEAFARERS WORLDWIDE. WITH FACILITIES FOR SUPERYACHTS AND
AMENITIES FOR THE GLOBAL SAILING COMMUNITY, MINA IS
STRATEGICALLY LOCATED ALONG REGIONAL SAILING ROUTES.



A N G E L B A Y

MINA'S PUBLIC BEACHFRONT PLAYGROUND, OPEN TO ALL. CONNECTING DESTINATIONS LIKE NIKKI BEACH AND INTERCONTINENTAL, IT'S A STRETCH OF PRISTINE SHORELINE WITH BEACHSIDE DINING, WATER SPORTS, AND ENDLESS ACTIVITIES.



M I N A B O U L E V A R D

THIS BUSTLING STRIP CONNECTS MINA HARBOUR AND MARINA, LINED WITH RETAIL OUTLETS, EATERIES, AND CULTURAL HOTSPOTS. IT'S WHERE THE COMMUNITY COMES ALIVE - A PLACE TO CONNECT AND EXPERIENCE THE ISLAND'S ENERGY.



A Natural
O A S I S A W A I T S

A HAVEN OF NATURAL BEAUTY WHERE FLAMINGOS,
VIBRANT MANGROVES AND TOWERING MOUNTAINS
EMBRACE THE HARMONY OF NATURE.



An Avian S Y M P H O N Y

HOME TO FLAMINGOS AND OVER 60 OTHER
SPECIES OF BIRDS - THIS IS THE BEATING HEART
OF MINA'S NATURAL ENVIRONMENT.



Breath of

F R E S H A I R

MINA'S LUSH MANGROVES AND VIBRANT GREENERY FILL THE AIR
WITH A NATURAL FRESHNESS, ENRICHED BY COASTAL BREEZES AND
THE UNTOUCHED BEAUTY OF ITS SURROUNDINGS.



Ras Al Khaimah's

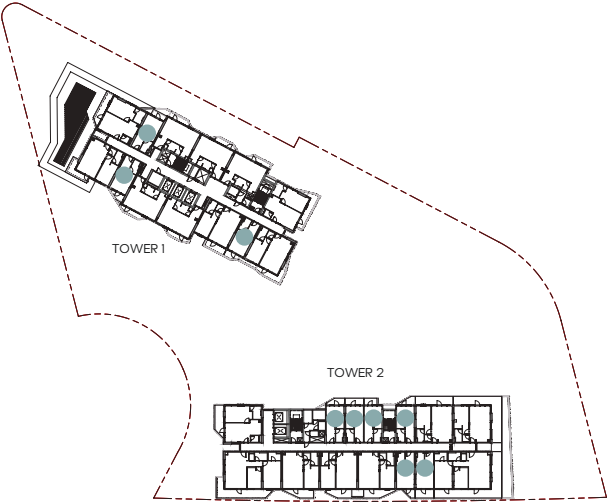
N A T U R A L B E A U T Y

SITUATED IN THE NORTH OF THE UAE, RAS AL KHAIMAH OFFERS
A UNIQUE ESCAPE WITH ITS UNTOUCHED LANDSCAPES. JUST A SHORT
DRIVE FROM DUBAI AND ABU DHABI, IT COMBINES PRIME LOCATION WITH
THE SERENITY OF MOUNTAINS, BEACHES, AND DESERT.

Studio

| UNIT SIZE(FROM - TO) | SQM | SQFT |
|----------------------|---------------|-----------------|
| INTERNAL AREA | 31.6 - 33.8 | 340.8 - 364.7 |
| BALCONY AREA | 3.3 - 21.2 | 36.27 - 228.4 |
| TOTAL AREA | 35.20 - 53.86 | 378.89 - 579.74 |

| LOCATION | LEVEL | SERIES |
|----------|-----------------|------------------------|
| TOWER O1 | LEVEL O1 | O1, O3 |
| | LEVEL O2 to O5 | O3, O7, 13 |
| | LEVEL O6 to 15 | 11 |
| TOWER O2 | GROUND LEVEL | O2, O8 |
| | MEZZANINE LEVEL | O2, O6, O9 |
| | LEVEL O1 | O6, O7, 11, 13 |
| | LEVEL O2 | O6, O7, 11, 12, 13, 14 |
| | LEVEL O3 | O8, O9, 10 |
| | LEVEL O4 | O8, O9, 10 |



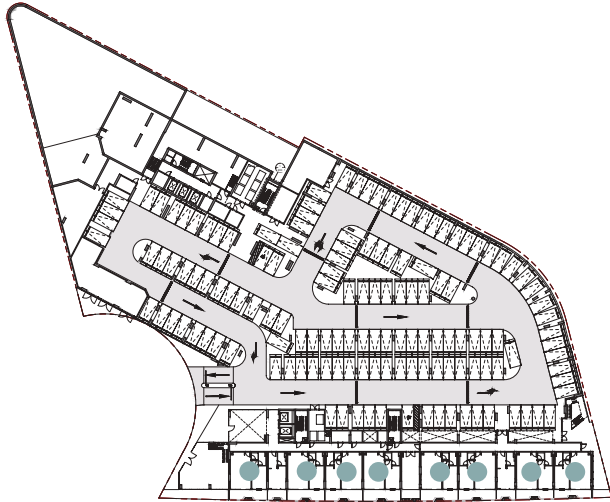
Floor plan numbers, square footage, and floor plans are approximate. Final dimensions, square footage and floor plans may vary or may be mirrored. Balcony area varies depending on location of unit on the floor.



1 Bedroom - Premium / Premium Chalet

| UNIT SIZE(FROM - TO) | SQM | SQFT |
|----------------------|----------------|------------------|
| INTERNAL AREA | 64.9 - 66.4 | 699.2 - 715.5 |
| BALCONY AREA | 5.5 - 35.5 | 59.8 - 382.3 |
| TOTAL AREA | 71.65 - 100.57 | 771.23 - 1082.53 |

| LOCATION | LEVEL | SERIES |
|----------|-----------------|--------------------------------|
| TOWER O1 | LEVEL O1 to O5 | O6 |
| | LEVEL O6 & 15 | O5 |
| | LEVEL 18 to 19 | O3 |
| TOWER O2 | GROUND LEVEL | O1, O3, O4, O5, O6, O7, O9, 10 |
| | MEZZANINE LEVEL | O1, O3, O4, O5, O7, O8, 10, 11 |
| | LEVEL O1 | O3, O4, O5, 10, 12 |
| | LEVEL O2 | O3, O4, O5, 10 |
| | LEVEL O3 to O4 | O3, O4, O5 |



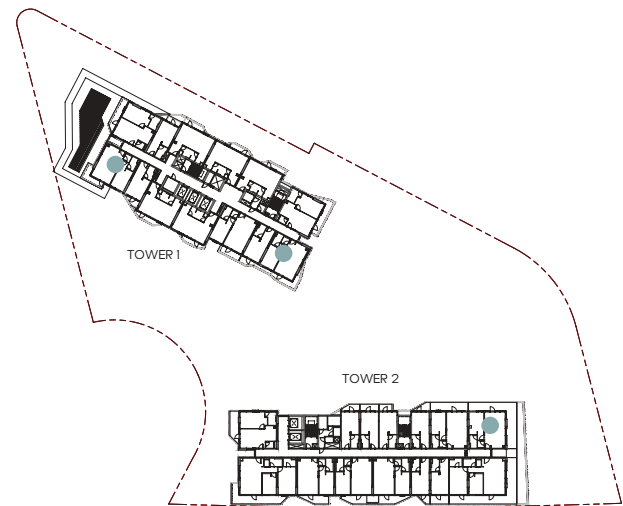
Floor plan numbers, square footage, and floor plans are approximate. Final dimensions, square footage and floor plans may vary or may be mirrored. Balcony area varies depending on location of unit on the floor.



1 Bedroom - A (Premium Corner)

| UNIT SIZE(FROM - TO) | SQM | SQFT |
|----------------------|----------------|------------------|
| INTERNAL AREA | 64.61 - 65.93 | 695.46 - 709.66 |
| BALCONY AREA | 10.97- 56.33 | 118.08 - 606.33 |
| TOTAL AREA | 76.88 - 120.94 | 823.55 - 1301.79 |

| LOCATION | LEVELS | SERIES |
|----------|----------------|--------|
| TOWER O1 | LEVEL O1 | O2 |
| | LEVEL O2 | O2, O8 |
| | LEVEL O3 to O5 | O2, O8 |
| TOWER O2 | LEVEL O1 & O2 | O9 |

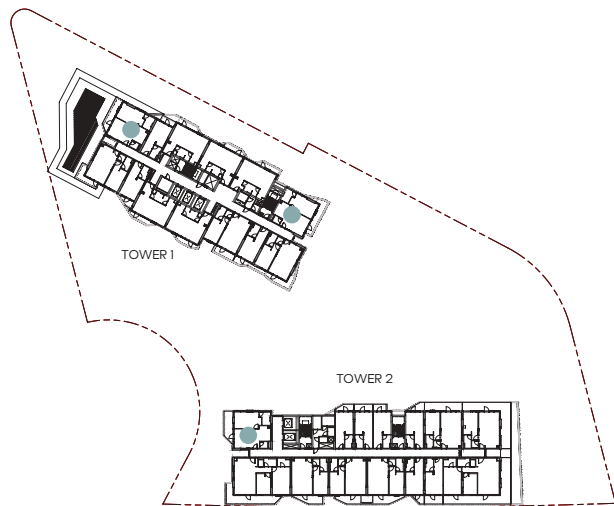


Floor plan numbers, square footage, and floor plans are approximate. Final dimensions, square footage and floor plans may vary or may be mirrored. Balcony area varies depending on location of unit on the floor.

1 Bedroom - B (Premium Corner)

| UNIT SIZE(FROM - TO) | SQM | SQFT |
|----------------------|---------------|------------------|
| INTERNAL AREA | 66.36 - 66.7 | 714.29 - 718.06 |
| BALCONY AREA | 8.89 - 70.47 | 95.69 - 758.53 |
| TOTAL AREA | 75.6 - 136.83 | 813.75 - 1472.83 |

| LOCATION | LEVELS | SERIES |
|----------|----------------|--------|
| TOWER O1 | LEVEL O2 to O5 | O1, O9 |
| | LEVEL O6 to 15 | O1, O7 |
| | LEVEL 16 & 17 | O6 |
| | LEVEL 18 & 19 | O5 |
| TOWER O2 | LEVEL O1 to O5 | O1 |

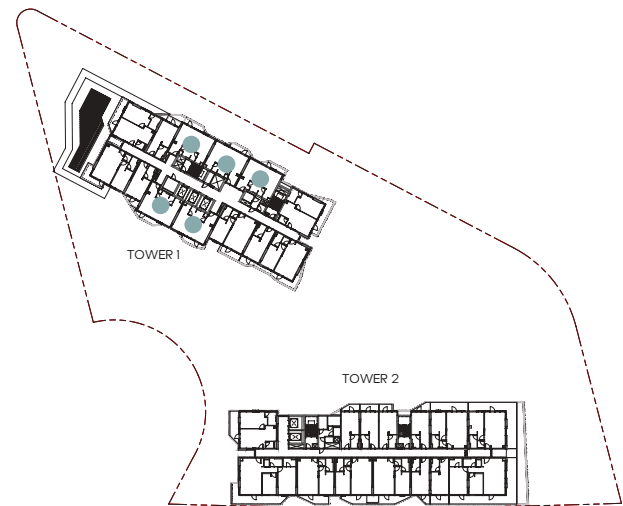


Floor plan numbers, square footage, and floor plans are approximate. Final dimensions, square footage and floor plans may vary or may be mirrored. Balcony area varies depending on location of unit on the floor.

1 Bedroom Suite

| UNIT SIZE(FROM - TO) | SQM | SQFT |
|----------------------|-------------|----------------|
| INTERNAL AREA | 53.5 - 54.7 | 576.4 - 589.3 |
| BALCONY AREA | 5 - 29.8 | 54.5 - 321.4 |
| TOTAL AREA | 58.9 - 84.5 | 633.99 - 908.9 |

| LOCATION | LEVELS | SERIES |
|----------|----------------|----------------|
| TOWER O1 | LEVEL O1 | O4,O5,O7 |
| | LEVEL O2 to O5 | O4,O5,10,11,12 |
| | LEVEL O6 to 15 | O3,O4,O8,O9,10 |
| | LEVEL 16 & 17 | O3,O7,O8 |
| | LEVEL 18 & 19 | O2,O6,O7 |

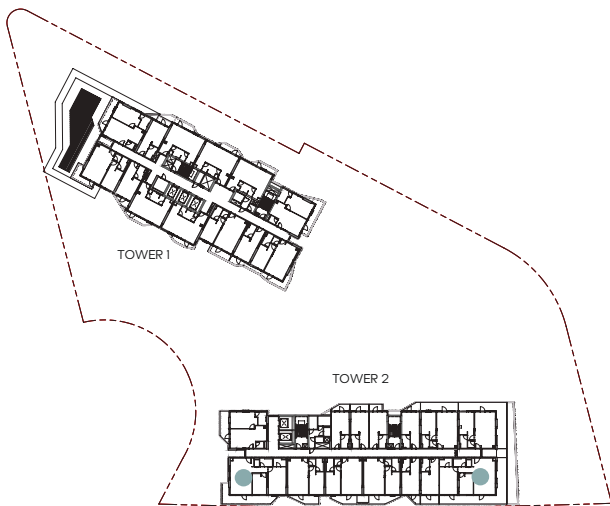


Floor plan numbers, square footage, and floor plans are approximate. Final dimensions, square footage and floor plans may vary or may be mirrored. Balcony area varies depending on location of unit on the floor.

2 Bedroom - A

| UNIT SIZE(FROM - TO) | SQM | SQFT |
|----------------------|-----------------|-------------------|
| INTERNAL AREA | 98.9 - 104.17 | 1064.77 - 1121.28 |
| BALCONY AREA | 11 - 61.8 | 118.7 - 665.8 |
| TOTAL AREA | 111.85 - 161.74 | 1203.94 - 1740.95 |

| LOCATION | LEVELS | SERIES |
|----------|----------------|--------|
| TOWER O1 | LEVEL O6 to 15 | O2, O6 |
| | LEVEL 16 & 17 | O5 |
| | LEVEL 18 & 19 | O4 |
| TOWER O2 | LEVEL O1 & O2 | O2, O8 |
| | LEVEL O3 & O4 | O2 |

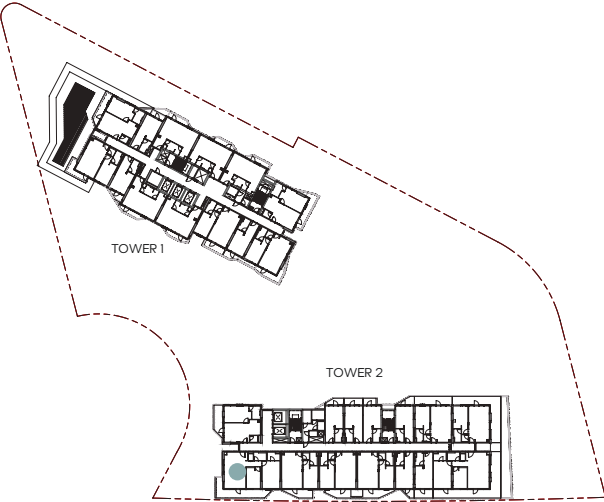


Floor plan numbers, square footage, and floor plans are approximate. Final dimensions, square footage and floor plans may vary or may be mirrored. Balcony area varies depending on location of unit on the floor.

2 Bedroom - B

| UNIT SIZE(FROM - TO) | SQM | SQFT |
|----------------------|-------------|------------------|
| INTERNAL AREA | 102.6 | 1105.3 |
| BALCONY AREA | 29.4 - 47.1 | 317 - 507.1 |
| TOTAL AREA | 132 - 151.3 | 1422.3 - 1612.54 |

| LOCATION | LEVELS | SERIES |
|----------|---------------|--------|
| TOWER O2 | LEVEL O3 & O4 | O6, O7 |

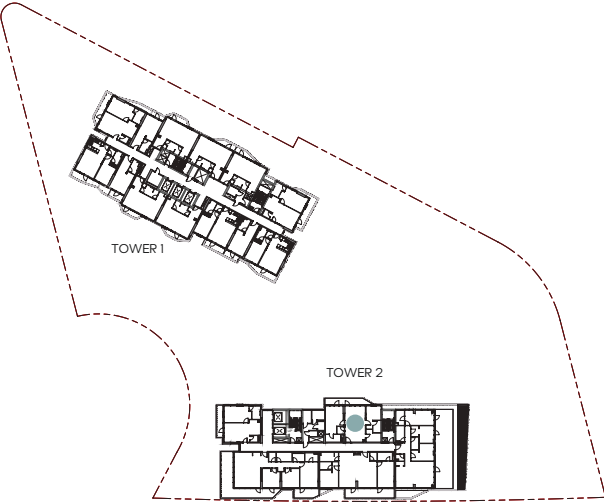


Floor plan numbers, square footage, and floor plans are approximate. Final dimensions, square footage and floor plans may vary or may be mirrored. Balcony area varies depending on location of unit on the floor.

2 Bedroom P-A

| UNIT SIZE(FROM - TO) | SQM | SQFT |
|----------------------|-------|---------|
| INTERNAL AREA | 97.2 | 1046.6 |
| BALCONY AREA | 14.4 | 155.4 |
| TOTAL AREA | 111.6 | 1202.11 |

| LOCATION | LEVELS | SERIES |
|----------|----------|--------|
| TOWER O2 | LEVEL O5 | O5 |



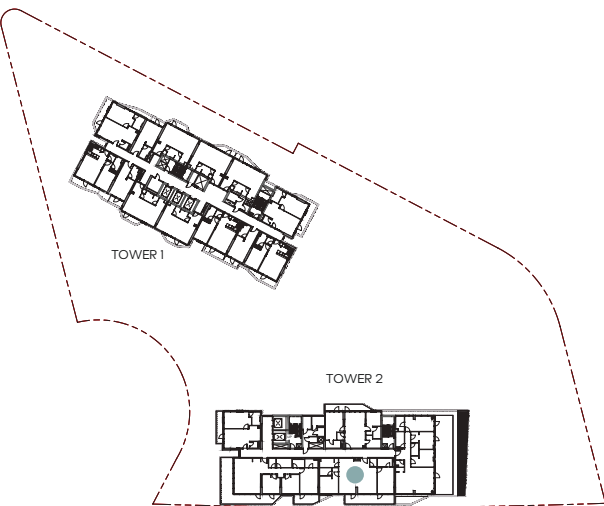
Floor plan numbers, square footage, and floor plans are approximate. Final dimensions, square footage and floor plans may vary or may be mirrored. Balcony area varies depending on location of unit on the floor.



2 Bedroom P-B

| UNIT SIZE(FROM - TO) | SQM | SQFT |
|----------------------|-------|---------|
| INTERNAL AREA | 129.4 | 1393.1 |
| BALCONY AREA | 23.1 | 249.2 |
| TOTAL AREA | 152.5 | 1642.47 |

| LOCATION | LEVELS | SERIES |
|----------|----------|--------|
| TOWER O2 | LEVEL O5 | O3 |

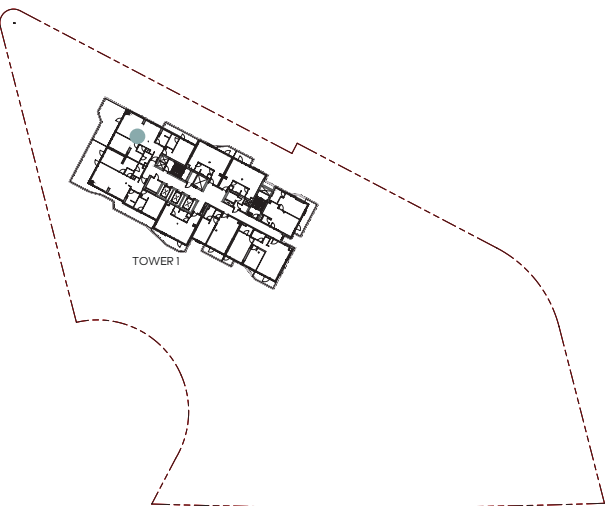


Floor plan numbers, square footage, and floor plans are approximate. Final dimensions, square footage and floor plans may vary or may be mirrored. Balcony area varies depending on location of unit on the floor.

2 Bedroom S-A

| UNIT SIZE(FROM - TO) | SQM | SQFT |
|----------------------|---------------|-----------------|
| INTERNAL AREA | 127.8 | 1375.6 |
| BALCONY AREA | 20 - 52.6 | 215.6 - 566.8 |
| TOTAL AREA | 147.8 - 180.4 | 1591.2 - 1942.4 |

| LOCATION | LEVELS | SERIES |
|----------|---------------|--------|
| TOWER O1 | LEVEL 16 & 17 | O1 |

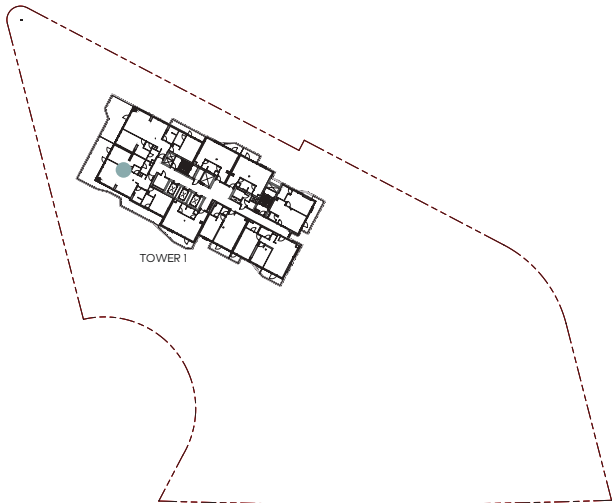


Floor plan numbers, square footage, and floor plans are approximate. Final dimensions, square footage and floor plans may vary or may be mirrored. Balcony area varies depending on location of unit on the floor.

2 Bedroom S-B

| UNIT SIZE(FROM - TO) | SQM | SQFT |
|----------------------|---------------|-----------------|
| INTERNAL AREA | 124.4 | 1339.4 |
| BALCONY AREA | 9.1 - 67.4 | 98.1 - 726.1 |
| TOTAL AREA | 133.5 - 191.9 | 1437.6 - 2065.5 |

| LOCATION | LEVELS | SERIES |
|----------|---------------|--------|
| TOWER O1 | LEVEL 16 & 17 | O2 |

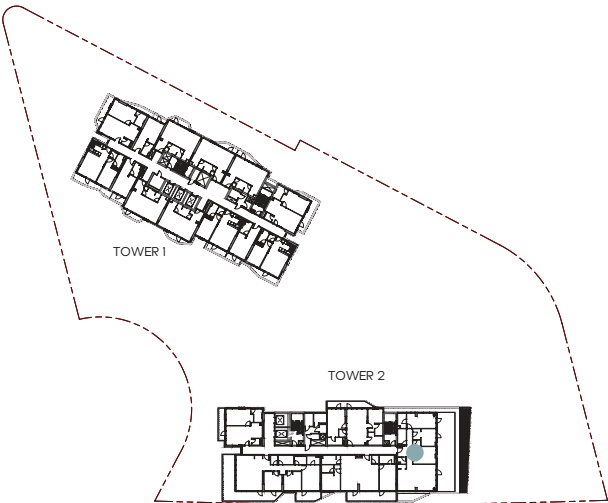


Floor plan numbers, square footage, and floor plans are approximate. Final dimensions, square footage and floor plans may vary or may be mirrored. Balcony area varies depending on location of unit on the floor.

3 Bedroom P-A

| UNIT SIZE(FROM - TO) | SQM | SQFT |
|----------------------|-------|--------|
| INTERNAL AREA | 148 | 1593.1 |
| BALCONY AREA | 68.8 | 741.1 |
| TOTAL AREA | 216.8 | 2334.2 |

| LOCATION | LEVELS | SERIES |
|----------|----------|--------|
| TOWER O2 | LEVEL O5 | O4 |

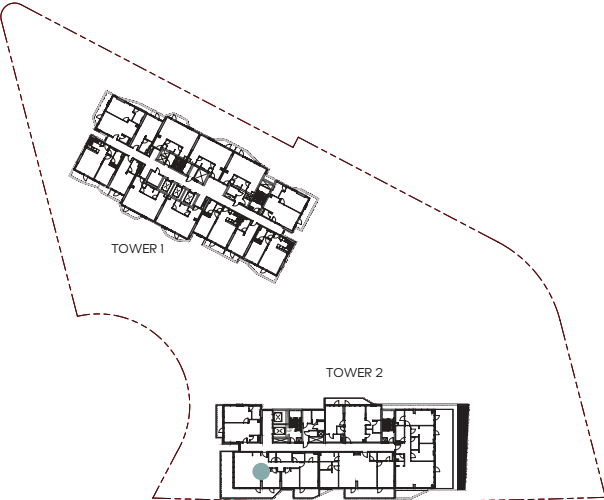


Floor plan numbers, square footage, and floor plans are approximate. Final dimensions, square footage and floor plans may vary or may be mirrored. Balcony area varies depending on location of unit on the floor.

3 Bedroom P-B

| UNIT SIZE(FROM - TO) | SQM | SQFT |
|----------------------|-------|--------|
| INTERNAL AREA | 146.7 | 1579.3 |
| BALCONY AREA | 60.8 | 655 |
| TOTAL AREA | 207.5 | 2234.3 |

| LOCATION | LEVELS | SERIES |
|----------|----------|--------|
| TOWER O2 | LEVEL O5 | O2 |

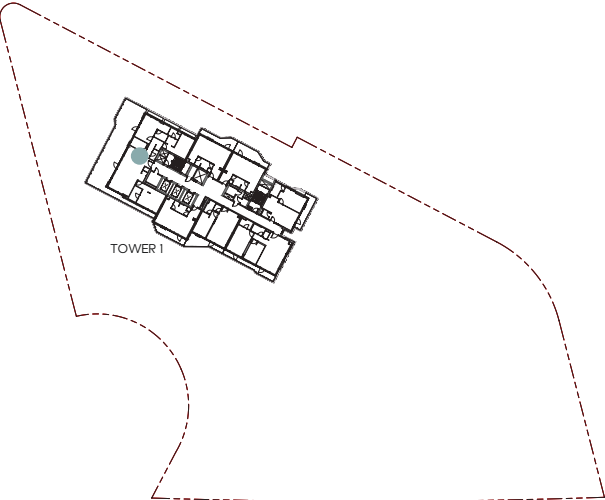


Floor plan numbers, square footage, and floor plans are approximate. Final dimensions, square footage and floor plans may vary or may be mirrored. Balcony area varies depending on location of unit on the floor.

3 Bedroom P-C

| UNIT SIZE(FROM - TO) | SQM | SQFT |
|----------------------|---------------|-------------------|
| INTERNAL AREA | 175.1 | 1884.9 |
| BALCONY AREA | 36.6 - 113.2 | 393.9 - 1219.3 |
| TOTAL AREA | 211.7 - 288.3 | 2278.94 - 3104.31 |

| LOCATION | LEVELS | SERIES |
|----------|---------------|--------|
| TOWER O1 | LEVEL 18 & 19 | O1 |



Floor plan numbers, square footage, and floor plans are approximate. Final dimensions, square footage and floor plans may vary or may be mirrored. Balcony area varies depending on location of unit on the floor.



Ground Floor



- Studio
- 1 Bedroom Premium Chalet

Floor plan numbers, square footage, and floor plans are approximate. Final dimensions, square footage and floor plans may vary or may be mirrored. Balcony area varies depending on location of unit on the floor.

Mezzanine



- Studio
- 1 Bedroom Premium Chalet

Floor plan numbers, square footage, and floor plans are approximate. Final dimensions, square footage and floor plans may vary or may be mirrored. Balcony area varies depending on location of unit on the floor.

First Floor



- | | | |
|-------------------|--------------------------------|-------------------|
| Studio | 1 Bedroom - A (Premium Corner) | 1 Bedroom - Suite |
| 1 Bedroom Premium | 1 Bedroom - B (Premium Corner) | 2 Bedroom - A |

Floor plan numbers, square footage, and floor plans are approximate. Final dimensions, square footage and floor plans may vary or may be mirrored. Balcony area varies depending on location of unit on the floor.

Second Floor



- | | | |
|-------------------|--------------------------------|-------------------|
| Studio | 1 Bedroom - A (Premium Corner) | 1 Bedroom - Suite |
| 1 Bedroom Premium | 1 Bedroom - B (Premium Corner) | 2 Bedroom - A |

Floor plan numbers, square footage, and floor plans are approximate. Final dimensions, square footage and floor plans may vary or may be mirrored. Balcony area varies depending on location of unit on the floor.



Third Floor



- | | | | |
|-------------------|--------------------------------|-------------------|---------------|
| Studio | 1 Bedroom - A (Premium Corner) | 1 Bedroom - Suite | 2 Bedroom - B |
| 1 Bedroom Premium | 1 Bedroom - B (Premium Corner) | 2 Bedroom - A | |

Floor plan numbers, square footage, and floor plans are approximate. Final dimensions, square footage and floor plans may vary or may be mirrored. Balcony area varies depending on location of unit on the floor.

Fourth Floor



- | | | | |
|-------------------|--------------------------------|-------------------|---------------|
| Studio | 1 Bedroom - A (Premium Corner) | 1 Bedroom - Suite | 2 Bedroom - B |
| 1 Bedroom Premium | 1 Bedroom - B (Premium Corner) | 2 Bedroom - A | |

Floor plan numbers, square footage, and floor plans are approximate. Final dimensions, square footage and floor plans may vary or may be mirrored. Balcony area varies depending on location of unit on the floor.

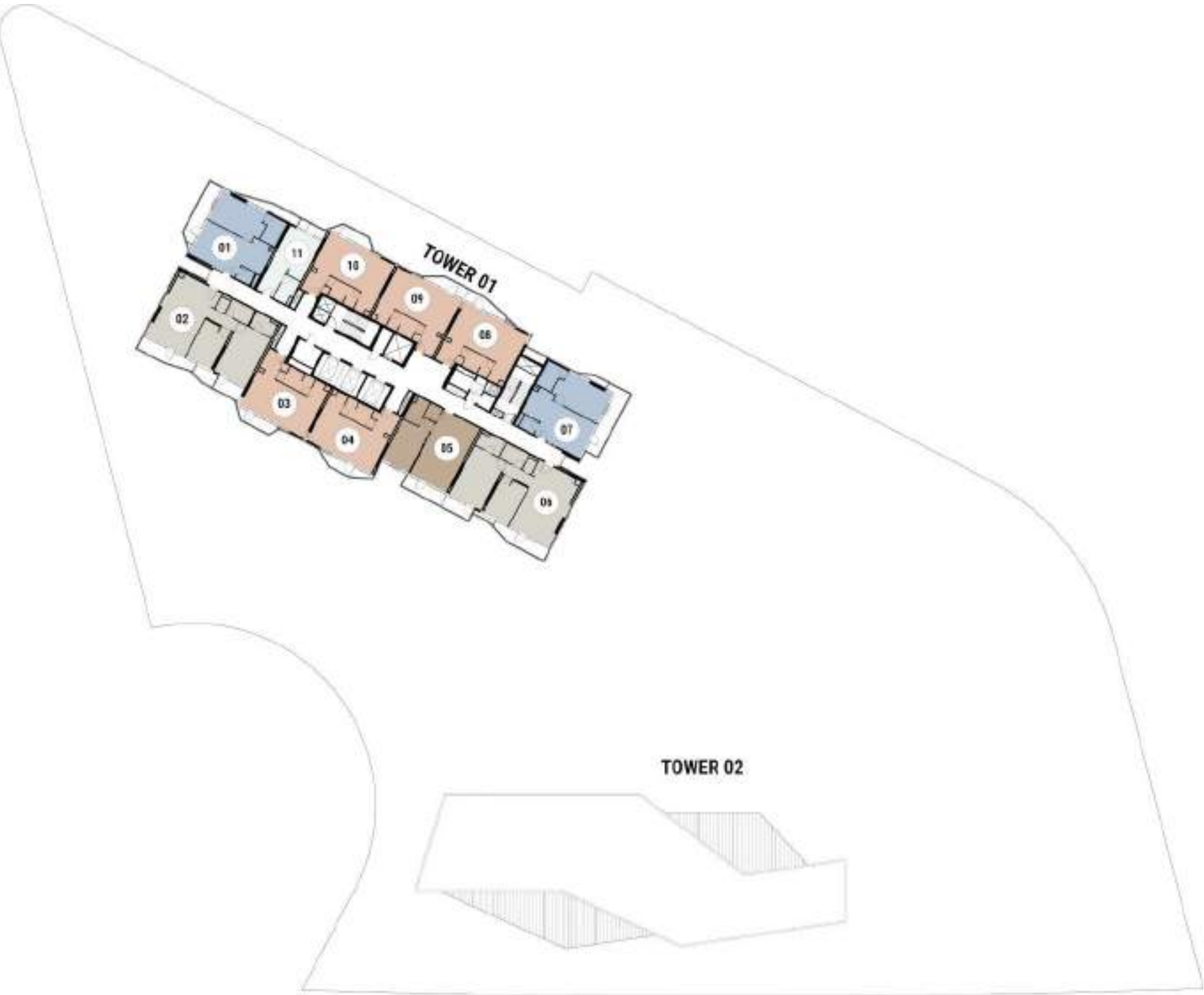
Fifth Floor



- | | | | | |
|-------------------|--------------------------------|-------------------|---------------|---------------|
| Studio | 1 Bedroom - A (Premium Corner) | 1 Bedroom - Suite | 2 Bedroom P-B | 3 Bedroom P-B |
| 1 Bedroom Premium | 1 Bedroom - B (Premium Corner) | 2 Bedroom P-A | 3 Bedroom P-A | |

Floor plan numbers, square footage, and floor plans are approximate. Final dimensions, square footage and floor plans may vary or may be mirrored. Balcony area varies depending on location of unit on the floor.

06 to 15 Floor



- | | | |
|-------------------|--------------------------------|---------------|
| Studio | 1 Bedroom - Suite | 2 Bedroom - A |
| 1 Bedroom Premium | 1 Bedroom - B (Premium Corner) | |

Floor plan numbers, square footage, and floor plans are approximate. Final dimensions, square footage and floor plans may vary or may be mirrored. Balcony area varies depending on location of unit on the floor.



16 to 17 Floor



- | | | |
|--------------------------------|-------------------|---------------|
| 1 Bedroom Premium | 1 Bedroom - Suite | 2 Bedroom S-A |
| 1 Bedroom - B (Premium Corner) | 2 Bedroom - A | 2 Bedroom S-B |

Floor plan numbers, square footage, and floor plans are approximate. Final dimensions, square footage and floor plans may vary or may be mirrored. Balcony area varies depending on location of unit on the floor.

18 to 19 Floor



- | | | |
|--------------------------------|-------------------|---------------|
| 1 Bedroom Premium | 1 Bedroom - Suite | 3 Bedroom P-C |
| 1 Bedroom - B (Premium Corner) | 2 Bedroom - A | |

Floor plan numbers, square footage, and floor plans are approximate. Final dimensions, square footage and floor plans may vary or may be mirrored. Balcony area varies depending on location of unit on the floor.



20 Years of

R A K P R O P E R T I E S

SINCE 2005, RAK PROPERTIES HAS BEEN AT THE FOREFRONT OF REAL ESTATE DEVELOPMENT IN RAS AL KHAIMAH, CONTRIBUTING SIGNIFICANTLY TO THE EMIRATE'S GROWTH AND APPEAL. ITS PORTFOLIO INCLUDES DIVERSE RESIDENTIAL, COMMERCIAL, AND HOSPITALITY PROJECTS, REFLECTING A STRONG COMMITMENT TO QUALITY, INNOVATION, AND SUSTAINABILITY.

